

Elbeco Sizing Information

A	MEN'S LONG SLEEVE SHIRTS											
	14.5	15	15.5	16	16.5	17	17.5	18	18.5	19	20	22
32	•	•	•	•	•	•	•	•	•	•	•	•
33	•	•	•	•	•	•	•	•	•	•	•	•
34	•	•	•	•	•	•	•	•	•	•	•	•
35	•	•	•	•	•	•	•	•	•	•	•	•
36/37	•	•	•	•	•	•	•	•	•	•	•	•

TEXTROP2, PARAGON PLUS, DUTYMAXX, PRESTIGE, CHP, LAPD, WEST COAST PRESTIGE

B	MEN'S LONG SLEEVE SHIRTS											
	14.5	15	15.5	16	16.5	17	17.5	18	18.5	19	20	22
32/33	•	•	•	•	•	•	•	•	•	•	•	•
34/35	•	•	•	•	•	•	•	•	•	•	•	•
36/37	•	•	•	•	•	•	•	•	•	•	•	•

FLORIDA SHERIFF, LASO

C	LONG SLEEVE SHIRTS						
	14/14.5	15/15.5	16/16.5	17/17.5	18/18.5	20	22
32/33	•	•	•	•	•	•	•
34/35	•	•	•	•	•	•	•
36/37	•	•	•	•	•	•	•

TEK3, EXPRESS, CHECKPOINTE, T2, UV1

D	MEN'S SHORT SLEEVE SHIRTS											
	14.5	15	15.5	16	16.5	17	17.5	18	18.5	19	20	22
	•	•	•	•	•	•	•	•	•	•	•	•

TEXTROP, DUTYMAXX, EXPRESS, PRESTIGE, CHP, LASO, LAPD

E	ALPHA SIZING							
	XS	S	M	L	XL	2XL	3XL	4XL
	13/13.5	14/14.5	15/15.5	16/16.5	17/17.5	18/18.5	20	22
	•	•	•	•	•	•	•	•

PARAGON PLUS, TEK3, UFX POLOS, UFX & BASE LAYERS, T2, UV1, RIPSTOP, WEST COAST PRESTIGE, 100% COTTON

F	WOMEN'S SHIRTS										
	30	32	34	36	38	40	42	44	46	48	50
	•	•	•	•	•	•	•	•	•	•	•

TEXTROP2, PARAGON PLUS, DUTYMAXX, PRESTIGE, EXPRESS, CHP, T2, WEST COAST PRESTIGE

G	WOMEN'S SHIRTS										
	26	28	30	32	34	36	38	40	42	44	46
	•	•	•	•	•	•	•	•	•	•	•

WINGS

H	MEN'S TROUSERS																					
	28	29	30	31	32	33	34	35	36	37	38	40	42	44	46	48	50	52	54	56	58	
REGULAR	•	•	•	•	•	•	•	•	•	•	•	•	•	•	•	•	•	•	•	•	•	•

TEK3, TEXTROP2, RIPSTOP

I	MEN'S TROUSERS																				
	28	29	30	31	32	33	34	35	36	37	38	40	42	44	46	48	50	52	54		
REGULAR	•	•	•	•	•	•	•	•	•	•	•	•	•	•	•	•	•	•	•	•	•

DUTYMAXX, PRESTIGE, LUXURY, 100% COTTON, WEST COAST, NJ

J	WOMEN'S TROUSERS												
	2	4	6	8	10	12	14	16	18	20	22	24	26
	•	•	•	•	•	•	•	•	•	•	•	•	•

ALL LADIES CHOICE

K	MEN'S JUMPSUITS																
	34	36	38	40	42	44	46	48	50	52	54	56	58	60	62	64	68
REGULAR	•	•	•	•	•	•	•	•	•	•	•	•	•	•	•	•	•
LONG	•	•	•	•	•	•	•	•	•	•	•	•	•	•	•	•	•

ALL MALE JUMPSUITS

L	WOMEN'S JUMPSUITS												
	4	6	8	10	12	14	16	18	20	22	24	26	28
	•	•	•	•	•	•	•	•	•	•	•	•	•

ALL FEMALE JUMPSUITS

M	BLOUSECOATS										
	36	38	40	42	44	46	48	50	52	54	56
SHORT	•	•	•	•	•	•	•	•	•	•	•
REGULAR	•	•	•	•	•	•	•	•	•	•	•
LONG	•	•	•	•	•	•	•	•	•	•	•

ALL BLOUSE COATS

N	OUTERWEAR							
	XS	S	M	L	XL	2XL	3XL	4XL
	30-32	34-36	38-40	42-44	46-48	50-52	54-56	58-60
SHORT	•	•	•	•	•	•	•	•
REGULAR	•	•	•	•	•	•	•	•
LONG	•	•	•	•	•	•	•	•

ALL OUTERWEAR

***Non-stock sizes may be available. Contact customer service for details.**

How to Measure using a cloth tape measure

NECK SIZE

Wrap the measuring tape around the neck where a shirt is usually buttoned, snug but not too tight (leave enough room to get one finger under tape)

ARM LENGTH

With the person's hand on their hip, measure from the center of the back neck, across shoulder and over the end of the elbow to the bend of the wrist. Blousecoats: measure from shoulder to the bend of the wrist

CHEST

1" below arm, measure around the chest, snug but not too tight

BUST

Measure under arms and across the shoulder blades at the fullest part of the bust

WAIST

Measure over shirt (not over trouser) at the height you wear your trousers; wrap measuring tape around waist-snug but not too tight (leave enough room to get two fingers under the tape)

HIP

Measure 5" down from waist measurement, around hips

SEAT

Measure snugly at the fullest part of the seat

INSEAM

Measure the inseam of an existing trouser that fits you well; measure from inside crotch to inside bottom edge

TORSO CIRCUMFERENCE

Measure from high point on shoulder around back, under crotch and up to starting point on shoulder

Fit Guide

V-Series External Vest Carrier

When measuring the user's ballistic carrier, we recommend the following in order to determine the most suitable size option:

- Use a cloth tape measure.
- Keep the ballistic panels inside the carrier when measuring.
- Measure the full amount of both the ballistic panels within the carrier, including the excess fabric bulk created by the panel carrier.
- Wear garments that are well-fitted while having someone take measurements (user should not take own measurements).
- While measurements are being taken, be sure user stands up straight and relaxed, so that measurements will reflect his/her natural stance.
- Record measurements exactly; do not round.

This document is designed to assist in determining suitable size options based on measurements taken of the intended user's current internal vest carrier, as well as key body measurements of the intended user. This process should not replace an actual garment fitting. Upon receipt of the garment, we recommend that it be tried on by the intended user with his/her internal carrier installed to ensure proper fit.

Front Measurements

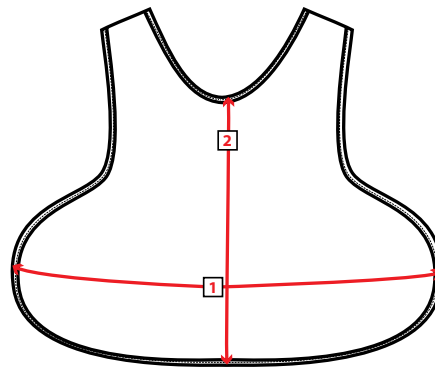


Fig. A

Back Measurements

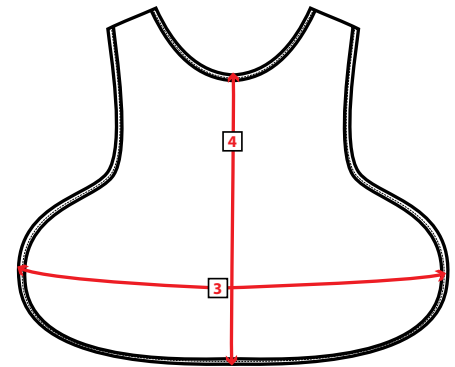


Fig. B

Smallest Waist Adjustment

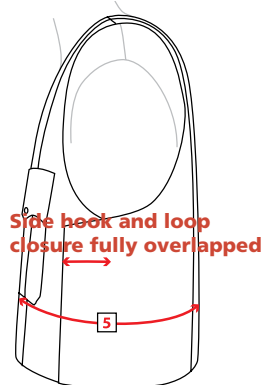


Fig. C

Largest Waist Adjustment

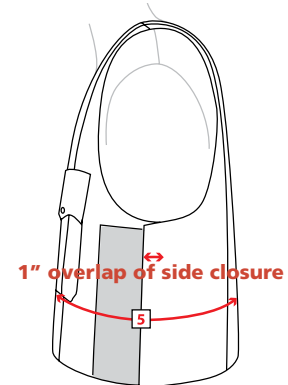


Fig. D

WARNING: Your ballistic panels must remain in your vest manufacturer's approved concealable carrier while being worn with your V-Series vest. This external vest carrier offers no ballistic and/or stab protection.

HOW TO MEASURE

1	FRONT PANEL WIDTH	Measure the WIDTH of your ballistic panel carrier's FRONT panel at its widest point. (Fig. A)
2	FRONT PANEL HEIGHT	Measure the HEIGHT of your ballistic panel carrier's FRONT panel from the front neckline to its waistline. (Fig. A)
3	BACK PANEL WIDTH	Measure the WIDTH of your ballistic panel carrier's BACK panel at the widest point of the panel. This point should fall between the bottom of the armhole and the waistline of the carrier. (Fig. B)
4	BACK PANEL HEIGHT	Measure the HEIGHT of your ballistic panel carrier's BACK panel from the center back neckline to the waistline. (Fig. B)
5	WAIST (FULLEST POINT OF STOMACH)	Measure around body at waist. Waist is measured over the shirt (not the trousers) at the fullest point of the stomach, or just below the ribs; whichever point is larger. Ensure the tape measure is horizontal and fits snugly around the body, but is not pulled too tight.

Fit Guide

V-Series

External Vest Carrier

Utilize the intended user's measurements, as determined using the process on page 38, to select the best size based on the charts below, starting with front panel width and moving through the grid to waist measurement.

Note: if user's measurements fall within more than one size range below, select the largest size that applies prior to moving to the next measurement section. If user measurements do not match those provided, please contact your Elbeco authorized dealer or representative for assistance.

V1 FIT GUIDE BASED ON BALLISTIC CARRIER MEASUREMENTS & ACTUAL BODY MEASUREMENTS (IN INCHES)

		V1 LENGTH	V1 SIZE - XS	V1 SIZE - S	V1 SIZE - M	V1 SIZE - L	V1 SIZE - XL	V1 SIZE - 2XL	V1 SIZE - 3XL
1	FRONT PANEL WIDTH	Short	16 ¼	18 ¼	20 ¼				
		Regular	18 ¼	20 ¼	22 ¼	24 ¼	26 ¼	28 ¼	30 ¼
		Long			23 ¼	25 ¼	27 ¼	29 ¼	31 ¼
		X-Long				26 ¼	28 ¼	30 ¼	32 ¼
2	FRONT PANEL HEIGHT	Short	10 ¼	11 ¼	12 ¼				
		Regular	11 ¼	12 ¼	13 ¼	14 ¼	15 ¼	15 ¾	16 ¾
		Long			15 ¼	15 ¾	16 ¾	17 ¾	17 ¾
		X-Long				17 ¾	18 ¾	18 ¾	19 ¾
3	BACK PANEL WIDTH	Short	17 ¼	19 ¼	21 ¼				
		Regular	19 ¼	21 ¼	23 ¼	25 ¼	27 ¼	29 ¼	31 ¼
		Long			24 ¼	26 ¼	28 ¼	30 ¼	32 ¼
		X-Long				27 ¼	29 ¼	31 ¼	33 ¼
4	BACK PANEL HEIGHT	Short	15 ¾	16 ¾	17 ¾				
		Regular	16 ¾	17 ¾	18 ¾	19 ¾	20 ¾	20 ¾	20 ¾
		Long			20 ¾	20 ¾	20 ¾	22 ¾	22 ¾
		X-Long				22 ¾	23 ¾	23 ¾	23 ¾
5	WAIST (FULLEST POINT OF STOMACH)	Short	29 ½ - 31 ½	31 ½ - 35 ½	35 ½ - 39 ½				
		Regular	31 ½ - 35 ½	35 ½ - 39 ½	37 ½ - 43 ½	41 ½ - 47 ½	44 ½ - 51 ½	48 ½ - 55 ½	52 ½ - 59 ½
		Long			39 ½ - 45 ½	43 ½ - 49 ½	46 ½ - 53 ½	50 ½ - 57 ½	54 ½ - 61 ½
		X-Long				45 ½ - 51 ½	48 ½ - 55 ½	52 ½ - 59 ½	56 ½ - 63 ½
6	SHIRT SIZE (FOR REFERENCE ONLY)	Short	13	13 ½	14 - 14 ½				
		Regular	13 ½	14 - 14 ½	15	16	17	18	19
		Long			15 ½	16 ½	17 ½	18 ½	19 ½
		X-Long				17	18	19	20

V2 FIT GUIDE BASED ON BALLISTIC CARRIER MEASUREMENTS & ACTUAL BODY MEASUREMENTS (IN INCHES)

		V2 LENGTH	V2 SIZE - XS	V2 SIZE - S	V2 SIZE - M	V2 SIZE - L	V2 SIZE - XL	V2 SIZE - 2XL	V2 SIZE - 3XL
1	FRONT PANEL WIDTH	Short	17	19	21				
		Regular	19	21	23	25	27	29	31
		Long			24	26	28	30	32
		X-Long				27	29	31	33
2	FRONT PANEL HEIGHT	Short	9.75	10.75	11.75				
		Regular	11.25	12.25	13.25	13.75	14.75	15.25	15.5
		Long			14.75	15.25	16.25	16.75	17
		X-Long				16.75	17.75	18.25	18.5
3	BACK PANEL WIDTH	Short	19	21	23				
		Regular	21	23	25	27	29	31	33
		Long			26	28	30	32	34
		X-Long				29	31	33	35
4	BACK PANEL HEIGHT	Short	14.625	15.625	16.625				
		Regular	16.125	17.125	18.125	18.625	19.625	20.125	20.375
		Long			19.625	20.125	21.125	21.625	21.875
		X-Long				21.625	22.625	23.125	23.375
5	WAIST (FULLEST POINT OF STOMACH)	Short	29.5 - 32.5	31.5 - 36.5	35.5 - 40.5				
		Regular	31.5 - 36.5	35.5 - 40.5	37.5 - 44.5	41.5 - 48.5	44.5 - 52.5	48.5 - 56.5	52.5 - 60.5
		Long			39.5 - 46.5	43.5 - 50.5	46.5 - 54.5	50.5 - 58.5	54.5 - 62.5
		X-Long				45.5 - 52.5	48.5 - 56.5	52.5 - 60.5	56.5 - 64.5
6	SHIRT SIZE (FOR REFERENCE ONLY)	Short	13	13.5	14 - 14.5				
		Regular	13.5	14 - 14.5	15	16	17	18	19
		Long			15.5	16.5	17.5	18.5	19.5
		X-Long				17	18	19	20

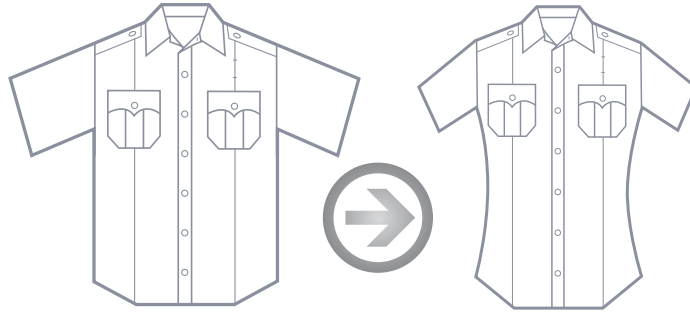
WARNING: Your ballistic panels must remain in your vest manufacturer's approved concealable carrier while being worn with your V-Series vest. This external vest carrier offers no ballistic and/or stab protection.

Ladies Choice™

The first uniform designed by women for women!

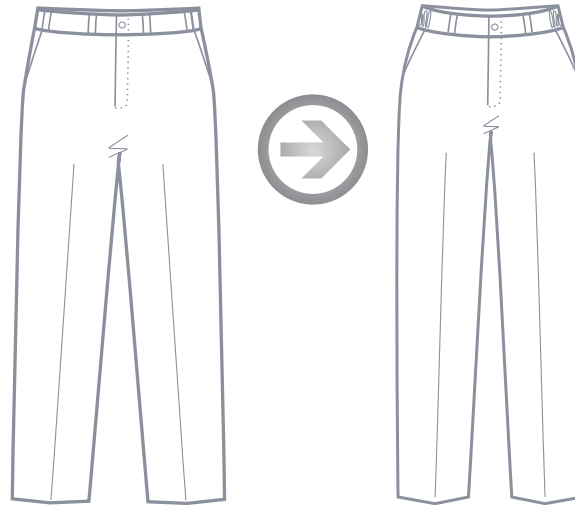
THE LADIES CHOICE SHIRT DESIGN FEATURES:

- Graded chest and waist dimension for flattering fit and increased movement
- Expanded chest and waist dimension for increased movement
- Armhole and sleeve shaped for more comfortable fit and appearance
- Graded body length for less bulk
- Increased hip sweep to fit a woman's body shape



THE LADIES CHOICE TROUSER DESIGN FEATURES:

- Side elastic for personal fit
- Curve at hip complements a woman's shape
- Reshaped seat for more comfortable movement
- Shortened front rise eliminates baggy appearance
- Straight leg for a more flattering look while providing functional movement
- Contoured waistband sits at natural waist for improved comfort
- Pocket depth accommodates a woman's reach



The Elbeco Ladies Choice™ pattern is available in a wide variety of shirt, polo, trouser and shorts styles. Just look for the Ladies Choice™ logo!

Men's Essential Fit

THE ESSENTIAL FIT TROUSER DESIGN FEATURES:

- Covert waistband for personal fit
- Lower rise with slight slope in front wide leg
- More contemporary fit
- Increased range of motion

